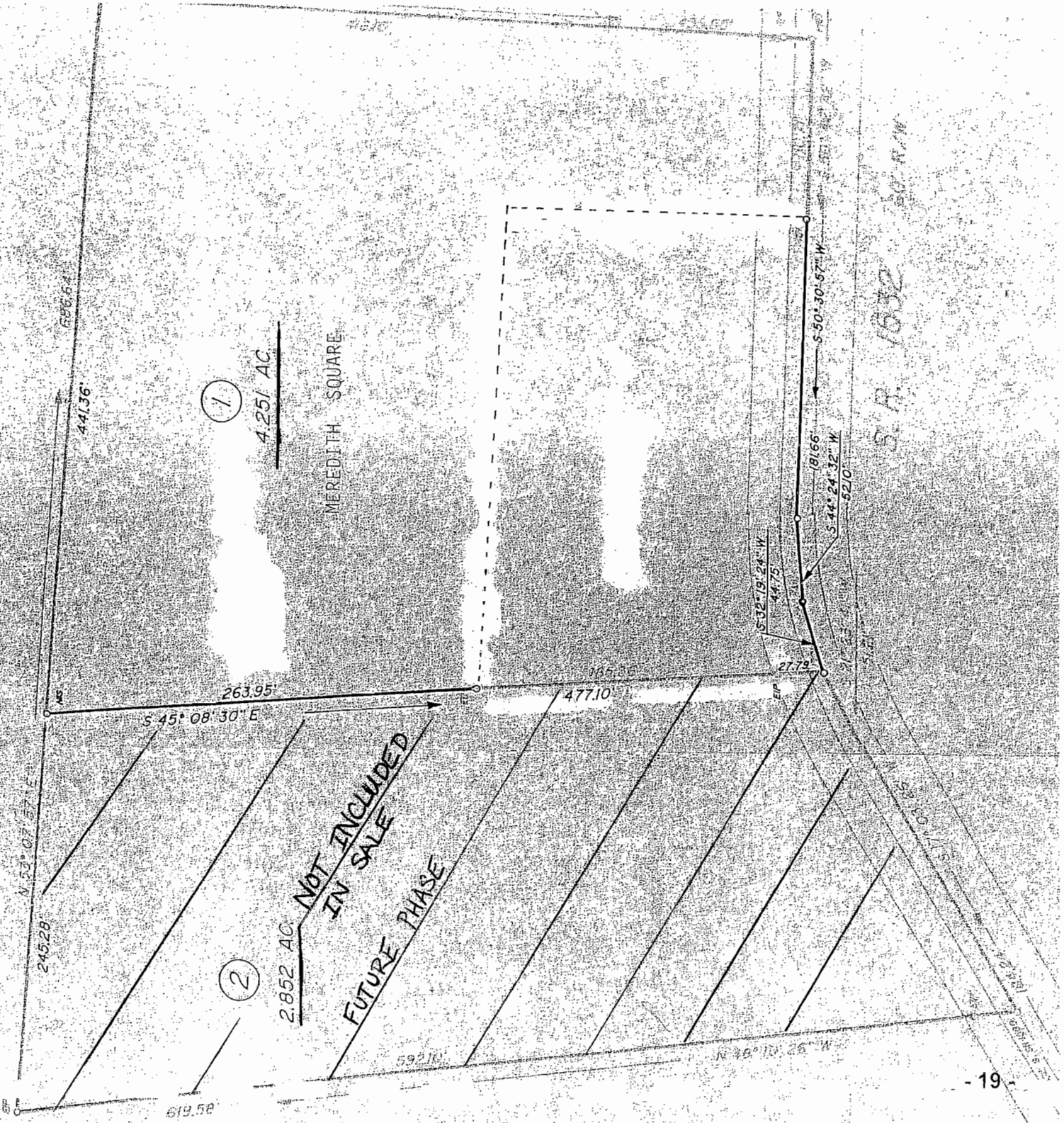
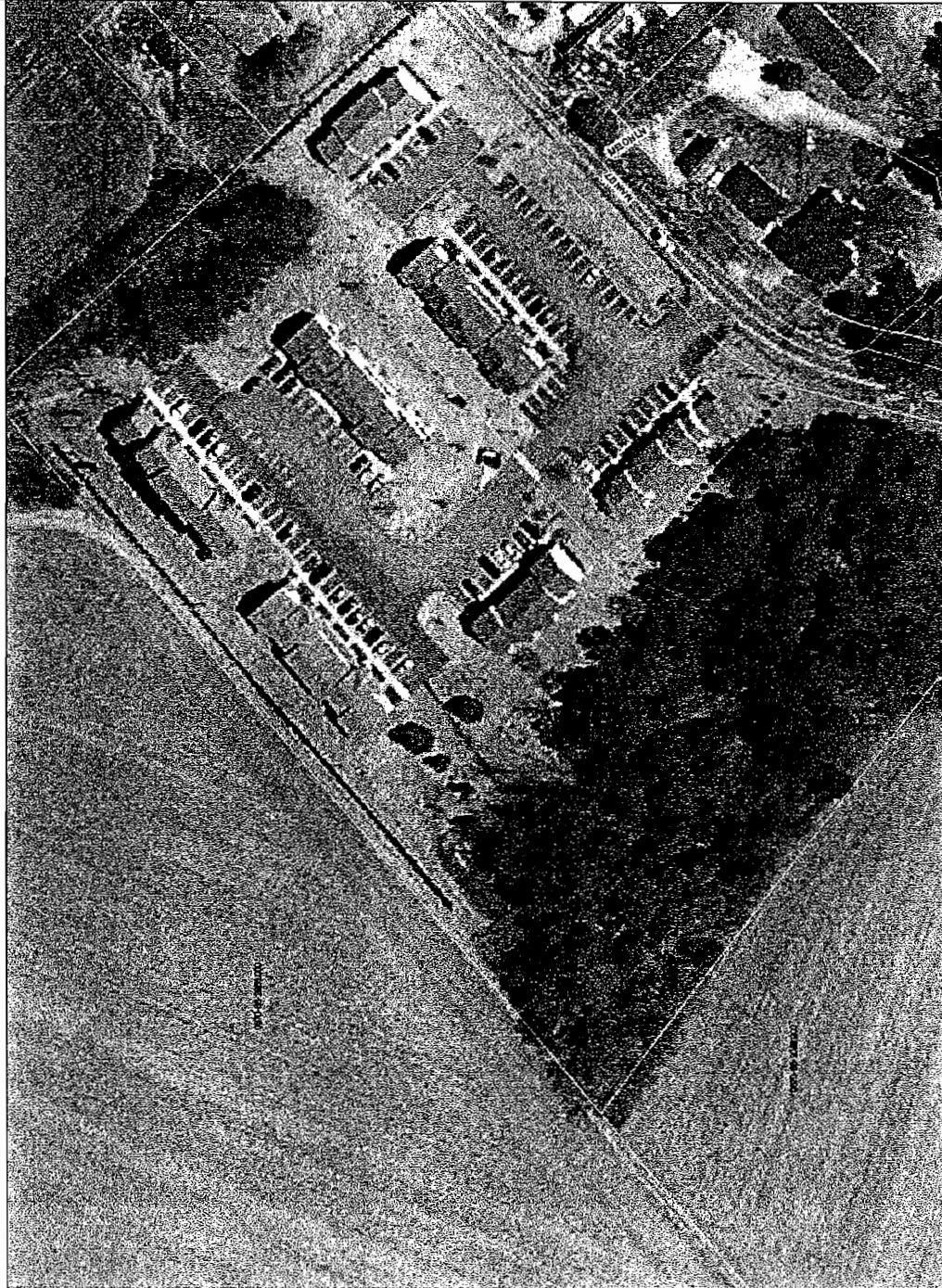


PLAT MAP

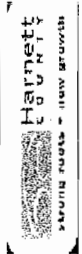


S. A. 1632

HARNETT COUNTY, NORTH CAROLINA GIS/LAND RECORDS



- city limits in
- roads
- Centerline
- Parcels
- Major Roads
- Color orthos



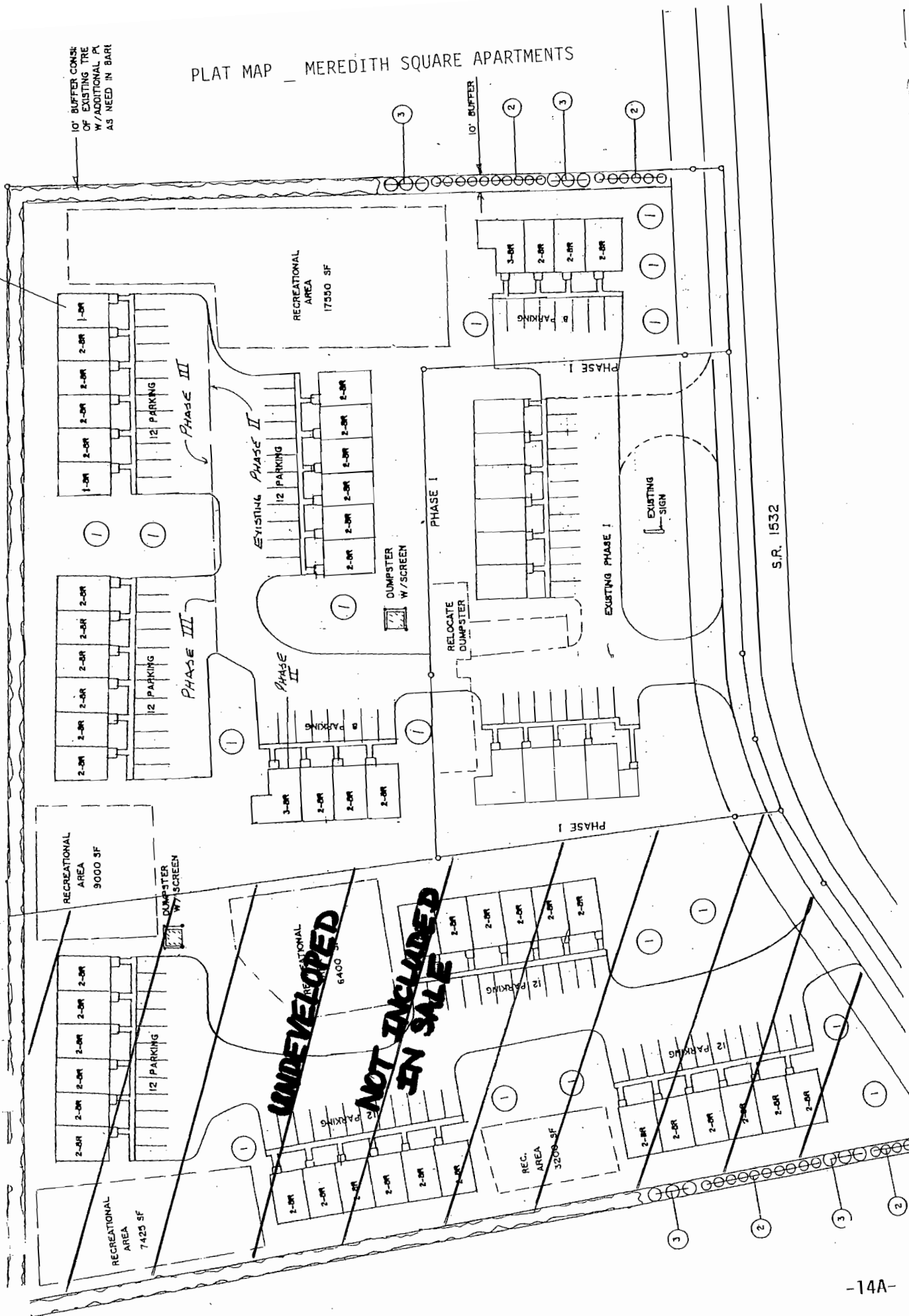
Any use of this map shall be at the sole risk of the user of this map. Although, all effort has been taken to ensure accuracy in the data presented, Harnett County makes no warranty, expressed or implied, as to the accuracy of this information represented herein. Any user of this product shall hold harmless Harnett County, its elected officials, employees and agents from and against any claim, damage, loss, action, cause of action, or liability arising from the use of this GIS product.

Harnett County GIS
305 W. Cornelius Harnett Blvd, Suite 100
Lillington, NC 27546
Phone: 910-893-7523 WWW.HARNETT.ORG

PLAT MAP - MEREDITH SQUARE APARTMENTS

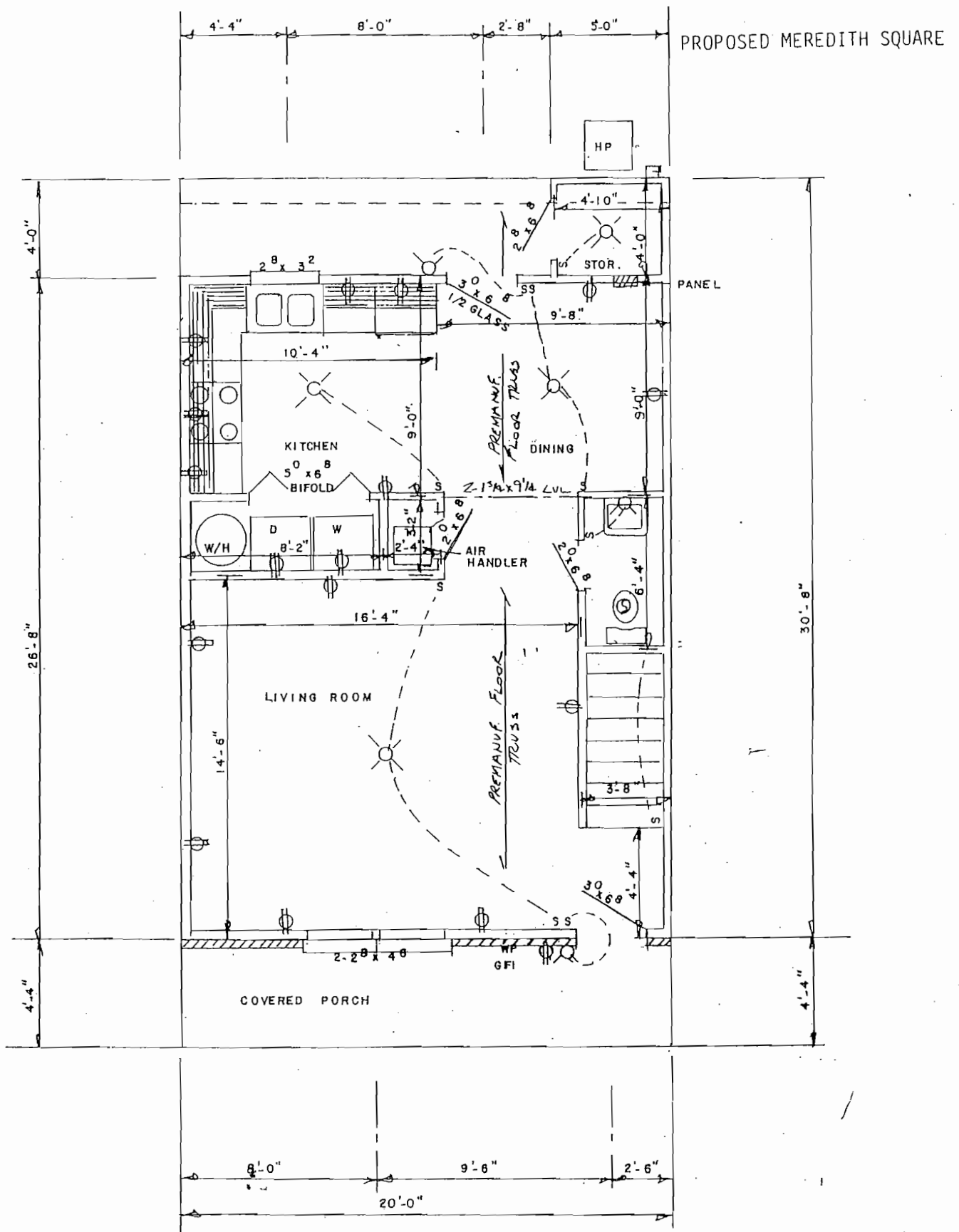
1 B2 HANDDRAINED UNIT

10' BUFFER CONC. OF EXISTING TR. W/ ADDITIONAL PL. AS NEEDED IN BARR.



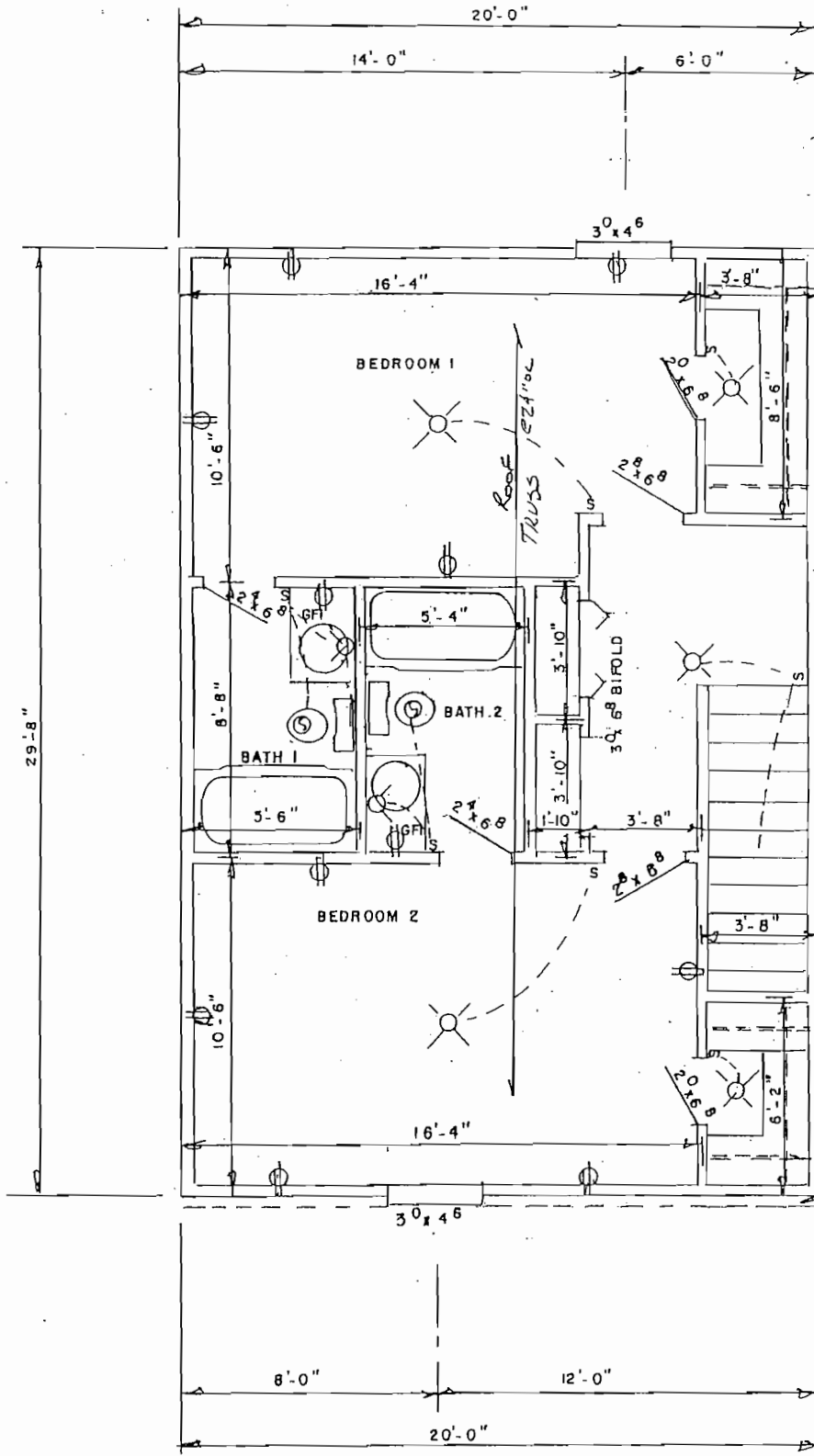
S.R. 1532

**UNDEVELOPED
NOT INCLUDED
IN SALE**



FIRST FLOOR PLAN

PROPOSED MEREDITH SQUARE



SECOND FLOOR PLAN