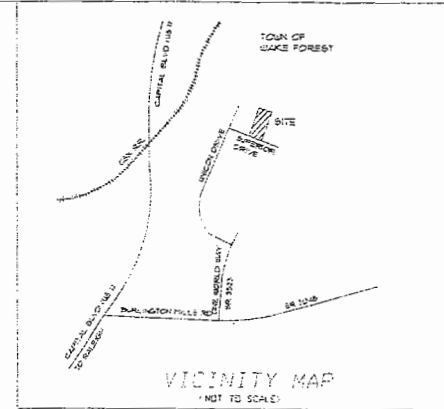


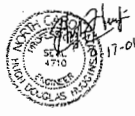
NOTE: PROVIDE INLET PROTECTION AT CATCH BASINS & DROP INLETS. SEE STANDARD DETAIL SHEETS.

TOPOGRAPHIC SURVEY
LOT 15 A
SOUTH FOREST BUSINESS PARK
WAKE FOREST, N.C. 27704
BY: BAK Consulting Engineers

SEE SOUTH FOREST BUSINESS PARK MASTER PLAN FOR EROSION CONTROL PLAN, DRAINAGE PLAN, SOILS MAP & LOCATION OF PUBLIC UTILITIES.

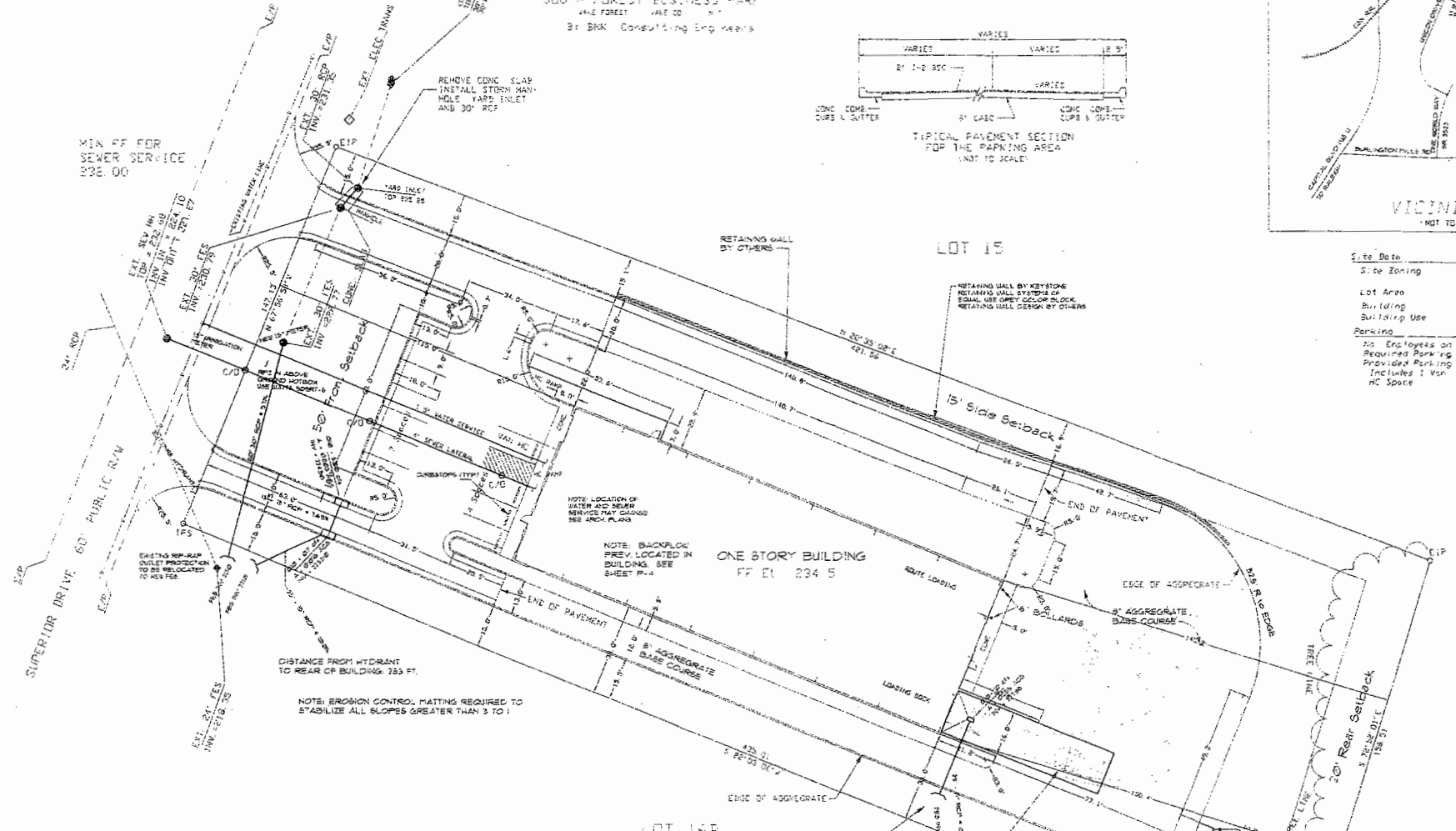


HUDGINS & ASSOCIATES, INC.
CONSULTING ENGINEERS
4901 WATERS EDGE DR., SUITE 204
WALTON, NORTH CAROLINA 27704
OFFICE (919) 538-9300
FAX: (919) 538-8202



Site Data

Site Zoning	I - South Forest Business Park Master Plan
Lot Area	1.5 Acres
Building	1 Story Blg
Building Use	Warehouse Facility
Parking	25 Employees on Largest Shift
Required Parking	5
Provided Parking	11
Includes	1 Van, 10 Space

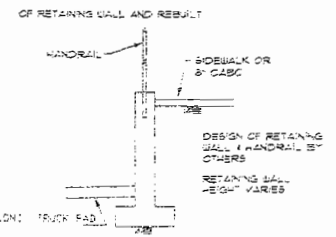


NOTE: PLACEMENT AND COMPACTION OF FILL MATERIALS SHALL CONFORM TO SECTION 106 OF THE N.C. DOT STANDARD SPECIFICATIONS FOR ROADS AND STRUCTURES DATED JULY 1995 OR LATEST.

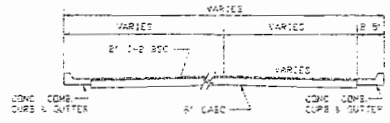
NOTE: CONSTRUCTION SHALL BE IN ACCORDANCE WITH THE STANDARDS AND SPECIFICATIONS OF THE TOWN OF WAKE FOREST, NORTH CAROLINA UNLESS OTHERWISE NOTED.

NOTE: EROSION CONTROL MATTING REQUIRED TO STABILIZE ALL SLOPES GREATER THAN 1 TO 1.

ANY WORK THE CONTRACTOR SHALL VERIFY THE LOCATION OF ALL UNDERGROUND UTILITIES WHETHER INDICATED ON THE DRAWINGS OR NOT. THE CONTRACTOR SHALL ASSURE THE PRESENCE ON-SITE OF A REPRESENTATIVE OF THE GAS COMPANY WHEN WORKING IN THE VICINITY OF ANY GAS MAINS.



TYPICAL DETAIL FOR LOADING DOCK RETAINING WALL
(NOT TO SCALE)

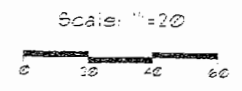


TYPICAL PAVEMENT SECTION FOR THE PARKING AREA
(NOT TO SCALE)

CONCRETE TRUCK PAD
8\"/>

CONCRETE DIVERTER PAD
8\"/>

NOTE ON CONTAINER AREA:
USE 6\"/>



DATE	REVISIONS

SITE AND UTILITIES

S-1

September 17, 2002

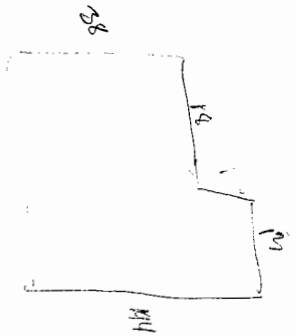
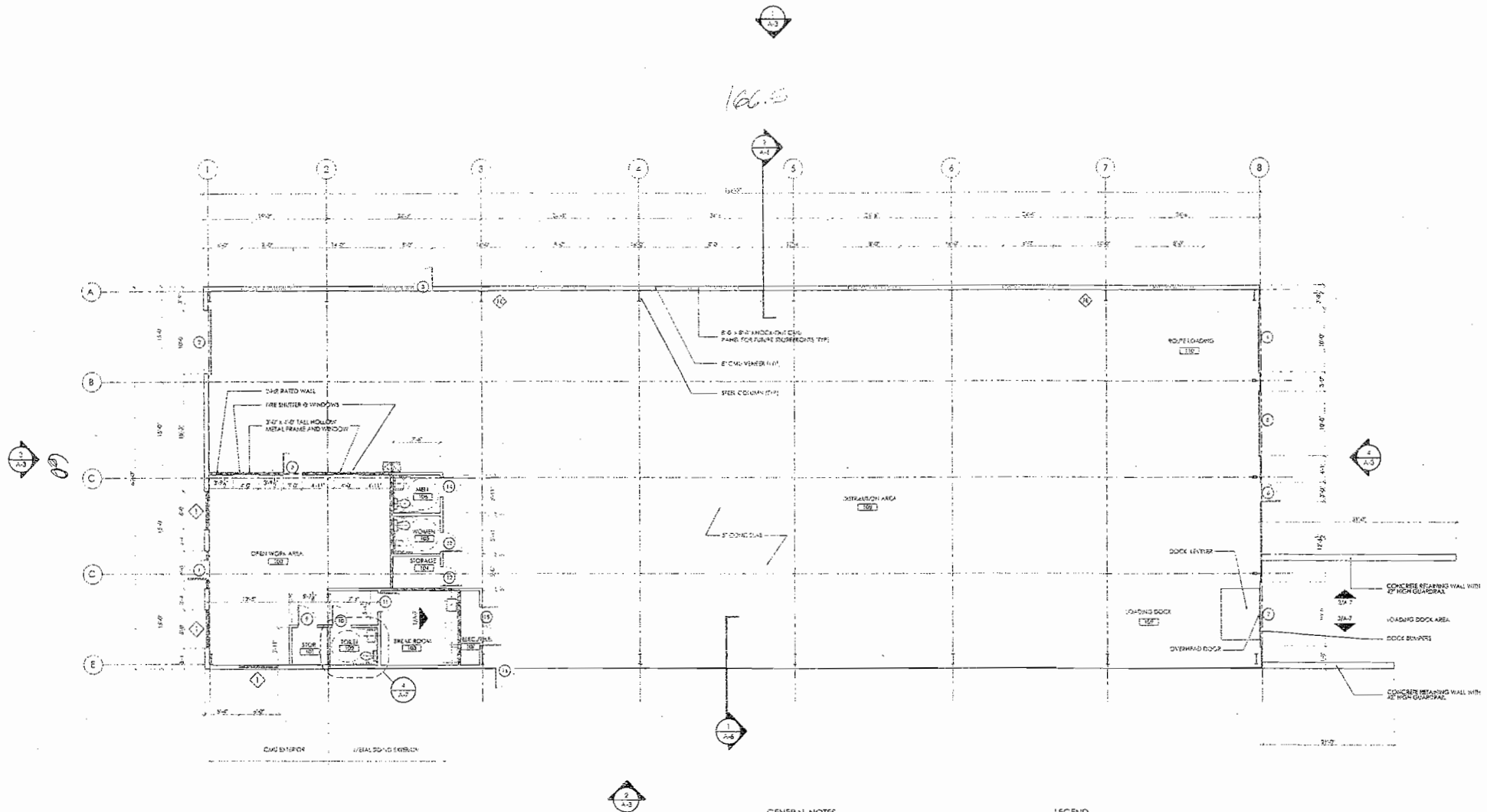
FINAL DRAWING
NOT RELEASED FOR CONSTRUCTION



WINSTEAD
WILKINSON

Architects, PLLC

201 North Henderson Street
Raleigh, North Carolina 27603
Telephone: 919.852.2878
Fax: 919.852.7901
www.architects@winsteadwilkinson.com



1 FLOOR PLAN
A-1 1/8" = 1'-0"

GENERAL NOTES
1. ALL WORK PROVIDED BY GENERAL CONTRACTOR TO BE IN ACCORDANCE WITH ALL LOCAL, STATE AND FEDERAL CODES AND ORDINANCES.
2. GENERAL CONTRACTOR TO VERIFY ALL FIELD CONDITIONS AND VERIFY ALL PORTION OF ANY DEVIATIONS PRIOR TO PROCEEDING WITH ANY WORK.

LEGEND
3/8" METAL STUDS AT 16" O.C. WITH 5/8" GYP BOARDS EACH SIDE
PRECAST CONCRETE SLAB WITH REINFORCING
2" MIN. RATED WALL OR GLAZED BY 2" MIN. METAL STUDS 16" O.C. WITH 5/8" GYP BOARDS EACH SIDE
6" CMU WALL
DOOR THRESHOLD ARE REVISION NUMBER, COORDINATE WITH ACTUAL LOCATION, ROOM NUMBER, STATE REGION, SEVER REVISIONS, VERTICAL ANGLE AND SURFACE-MOUNTED CONDITIONS

NEW FACILITY FOR:
THE NEWS AND OBSERVER
SUPERIOR DRIVE
WAKE FOREST, NORTH CAROLINA

JOB NUMBER
201134

DATE PLOTTED
14 SEPTEMBER 2001

REVISION	DATE

CONSTRUCTION
DOCUMENTS

Plans are the property of Winstead Wilkinson Architects, PLLC. No part of these plans may be reproduced or transmitted in any form or by any means, electronic or mechanical, including photocopying, recording, or by any information storage and retrieval system, without the prior written permission of Winstead Wilkinson Architects, PLLC. All rights reserved.