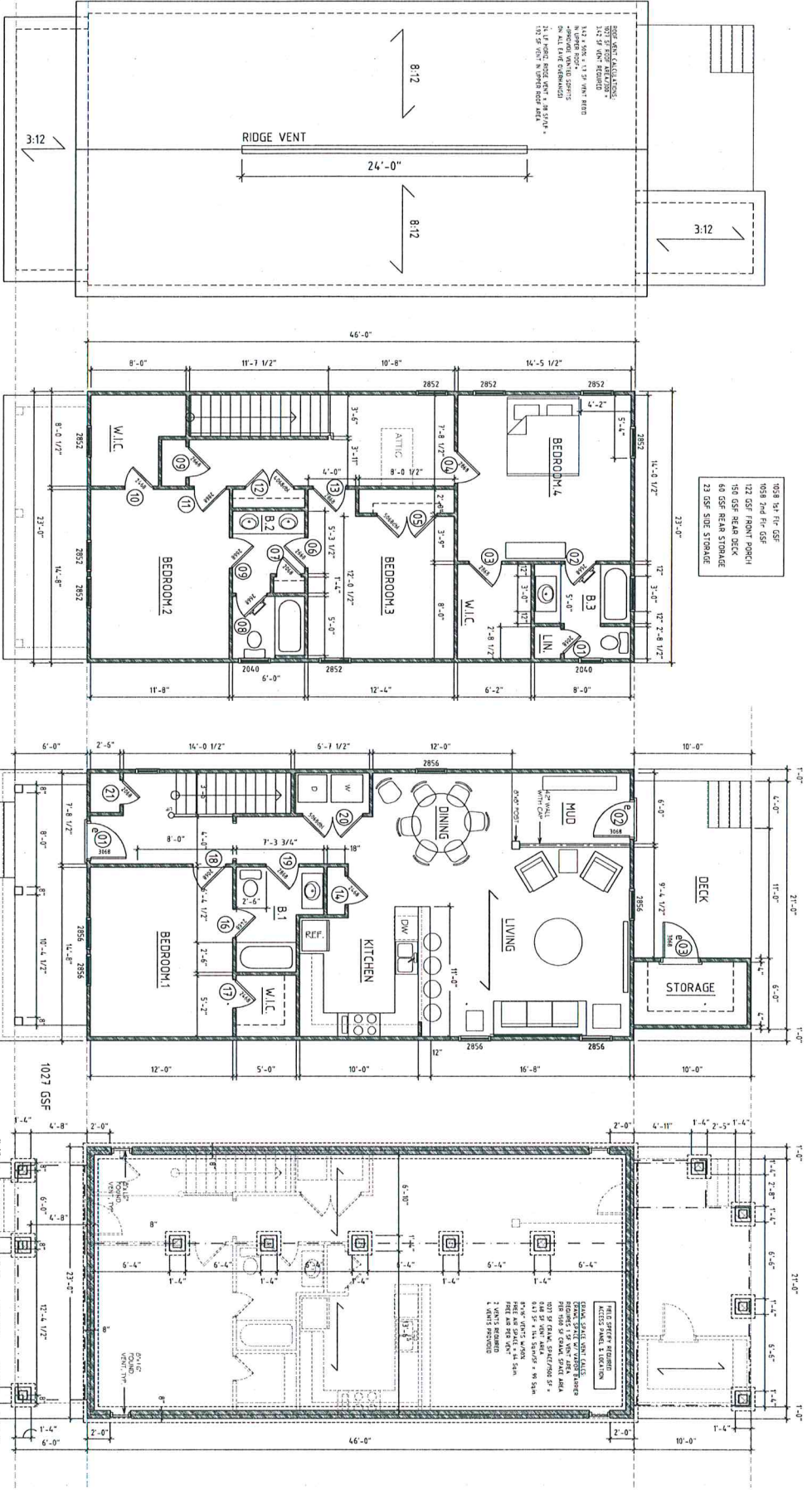
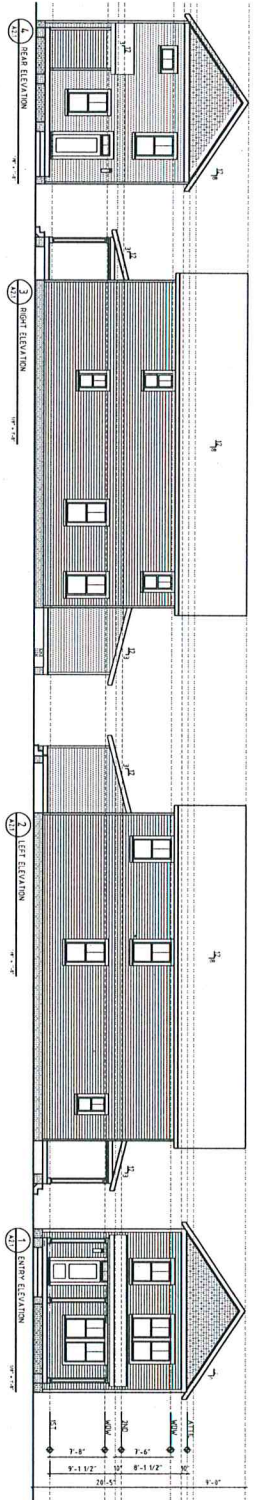


GENERAL NOTES:
 1. ALL DIMENSIONS ARE TO FACE UNLESS NOTED OTHERWISE.
 2. FINISHES ARE TO BE INDICATED BY SHADING OR HATCHING.
 3. ALL WALLS ARE TO BE 1/2" GYP BOARD ON STUDS UNLESS NOTED OTHERWISE.
 4. ALL FLOORS ARE TO BE 1/2" GYP BOARD ON JOISTS UNLESS NOTED OTHERWISE.
 5. ALL CEILING ARE TO BE 1/2" GYP BOARD ON JOISTS UNLESS NOTED OTHERWISE.
 6. ALL ROOFS ARE TO BE 1/2" GYP BOARD ON RAFTERS UNLESS NOTED OTHERWISE.
 7. ALL ROOF PITCHES ARE TO BE INDICATED BY A TRIANGLE WITH THE PITCH RATIO.
 8. ALL ROOF PITCHES ARE TO BE INDICATED BY A TRIANGLE WITH THE PITCH RATIO.
 9. ALL ROOF PITCHES ARE TO BE INDICATED BY A TRIANGLE WITH THE PITCH RATIO.
 10. ALL ROOF PITCHES ARE TO BE INDICATED BY A TRIANGLE WITH THE PITCH RATIO.
 11. ALL ROOF PITCHES ARE TO BE INDICATED BY A TRIANGLE WITH THE PITCH RATIO.
 12. ALL ROOF PITCHES ARE TO BE INDICATED BY A TRIANGLE WITH THE PITCH RATIO.
 13. ALL ROOF PITCHES ARE TO BE INDICATED BY A TRIANGLE WITH THE PITCH RATIO.
 14. ALL ROOF PITCHES ARE TO BE INDICATED BY A TRIANGLE WITH THE PITCH RATIO.
 15. ALL ROOF PITCHES ARE TO BE INDICATED BY A TRIANGLE WITH THE PITCH RATIO.
 16. ALL ROOF PITCHES ARE TO BE INDICATED BY A TRIANGLE WITH THE PITCH RATIO.
 17. ALL ROOF PITCHES ARE TO BE INDICATED BY A TRIANGLE WITH THE PITCH RATIO.
 18. ALL ROOF PITCHES ARE TO BE INDICATED BY A TRIANGLE WITH THE PITCH RATIO.
 19. ALL ROOF PITCHES ARE TO BE INDICATED BY A TRIANGLE WITH THE PITCH RATIO.
 20. ALL ROOF PITCHES ARE TO BE INDICATED BY A TRIANGLE WITH THE PITCH RATIO.



- 1. FRONT ELEVATION
- 2. RIGHT ELEVATION
- 3. LEFT ELEVATION
- 4. REAR ELEVATION
- 5. FIRST FLOOR PLAN
- 6. SECOND FLOOR PLAN
- 7. FOUNDATION PLAN
- 8. DOOR SCHEDULE

A100

FLOOR PLANS
 ELEVATIONS &
 FRAMING
 DIAGRAMS

REVISIONS	DATE

rsarle
 ARCHITECT



new residence for
 JRHUNTLEY HOMES
 918 CHANEY
 RALEIGH, NORTH CAROLINA

DATE 04.20.2016